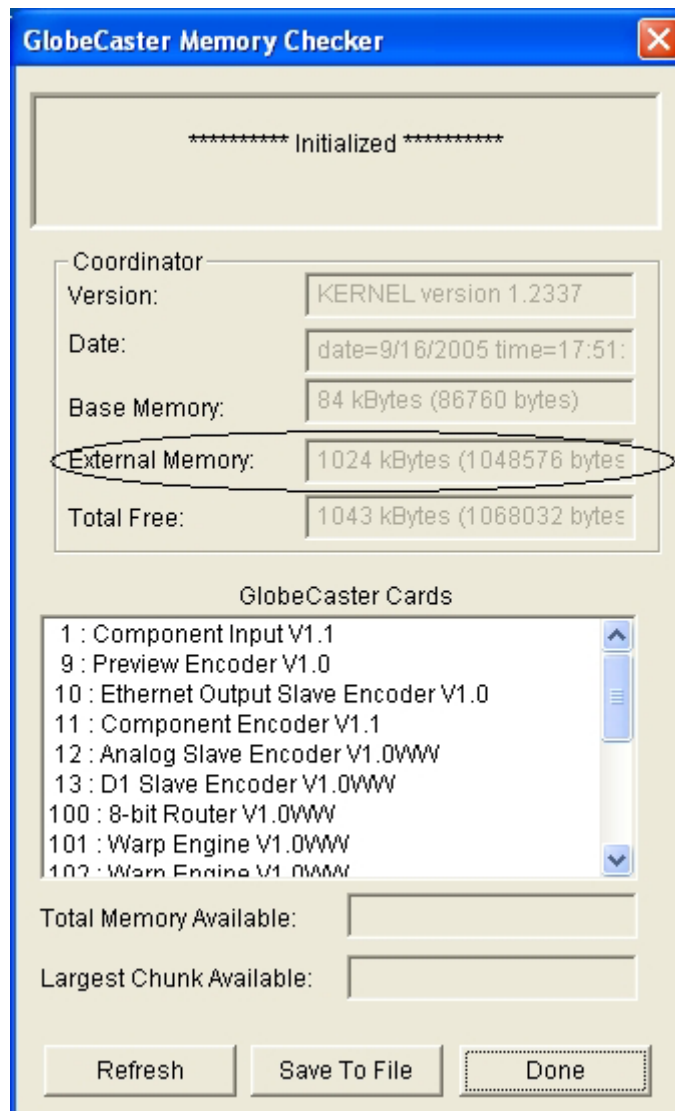




Coordinator memory check for Software versions 2.9.1 and higher

1. Download the GCCards.exe program from the GlobalStreams Web Site (<http://www.globalstreams.com/support/downloads/other.php>) and transfer it to the GlobeCaster Host PC.
2. Turn on the power to the GlobeCaster and double-click on the GCCards.exe program.
3. Your GlobeCaster has the 1MB Static Ram and is ready for Software 2.9.1 and higher if you have a number greater than 0 in the External Memory for the Coordinator card:



4. The GlobeCaster does NOT have the 1MB Static Ram installed if there is 0 in the External Memory of the Coordinator card:

